

VERLINDEN PRODUCTIONS

Modeling

Magazine



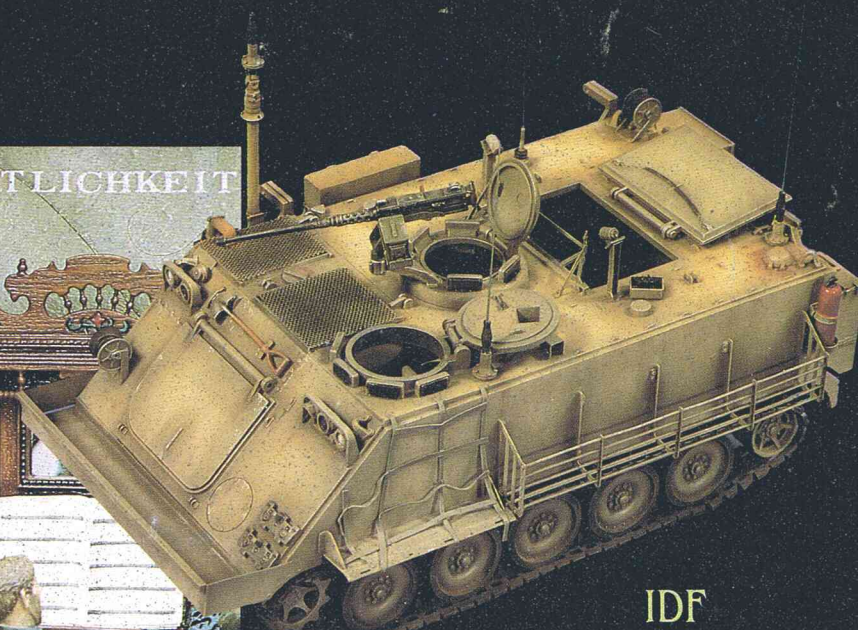
In this issue

In focus:
The US Navy's
GPC or "MULE"

"Am Bahnhof"
"Fall Gelb"
Two new WWII
dioramas



"Alte Kameraden"
A large 120mm diorama

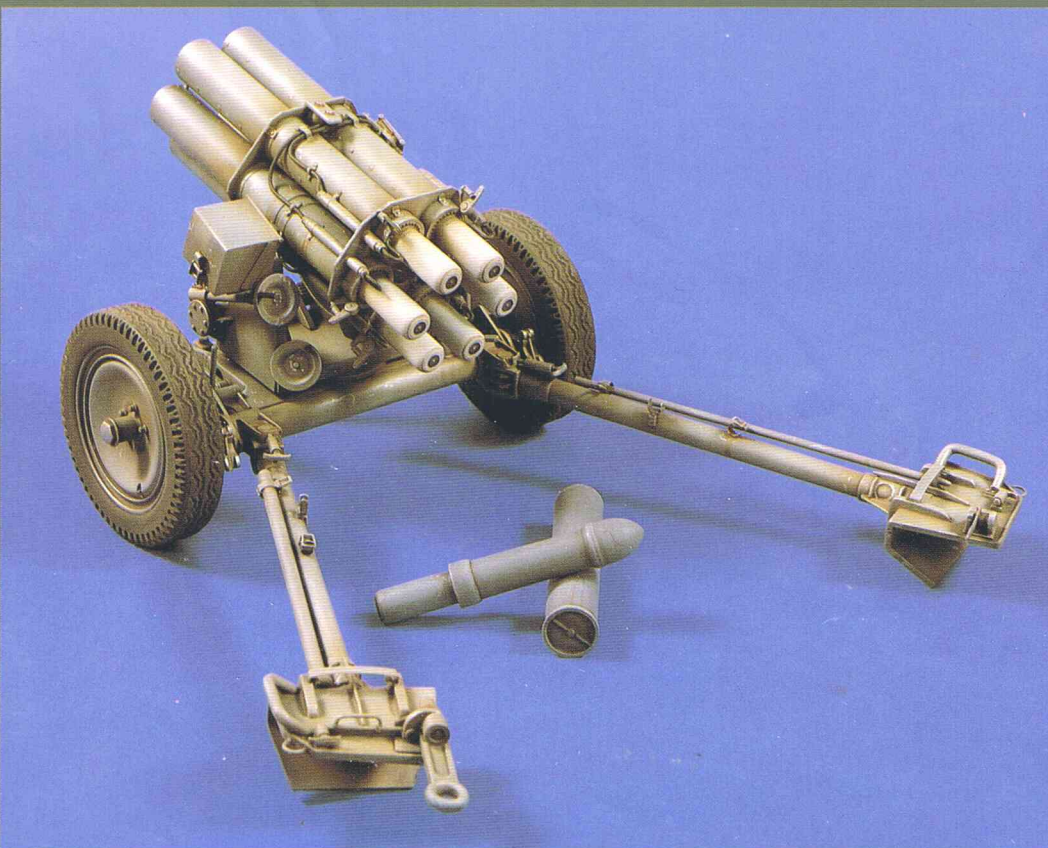


IDF
"Tracked Headshed"
Command & Communications
Vehicle

Tools & Techniques
"Modeling Vegetation"

While OTHERS take a step back WE are creating new dimensions

*1992 will be full of surprises
when we boost our BIG SCALE releases
for You to enjoy*



Next to a new 200mm GIANT SCALE figure representing an 82ND US Airborne soldier in Vietnam outfit we expand our range of 120mm accessories to be used with our series of large scale figures.

The first to be released in a new "Super Scale, Super Tech" series is the German 2cm FLAK38 combining resin parts and photo-etched metal to construct a 120mm (1:15) scale replica of this anti-aircraft gun. Coming next April in this series, again combining crisply casted resin parts, razor sharp brass parts and copper wire, will be an authentic 120mm scale model of the German 15cm NEBELWERFER.



VERLINDEN PRODUCTIONS
VERLINDEN PUBLICATIONS
Modeling books & accessories

Ondernemersstraat, 4
2500 LIER/BELGIUM

again setting the trend !



VERLINDEN PRODUCTIONS VERLINDEN PUBLICATIONS

Modeling books & accessories

Volume 3 Number 2

EDITORIAL

Chief Editor: François
VERLINDEN

Editor: Willy PEETERS
Associate Editor in the USA
Bob LETTERMAN

ART

Art Director: Willy PEETERS

SALES

Advertising, Sales & Marketing
Wim VERLINDEN
Judith DE BIE



François VERLINDEN
Willy PEETERS
Jef VERSWIJVEL



Bob LETTERMAN
Wes BRADLEY
Bill LETTERMAN SR.
Herb RIGG

EDITORIAL OFFICE
Ondernemersstraat 4,
KMO-Zone Mallekot
B-2500 LIER / BELGIUM

**

VERLINDEN PRODUCTIONS Modeling Magazine is a quarterly publication by VERLINDEN PUBLICATIONS, a division of VERLINDEN & STOCK nv.

Ondernemersstraat 4, KMO-Zone Mallekot,
B-2500 LIER, BELGIUM
Phone (03) 480 65 26 Fax (03) 489 29 26

The contents of this publication, including all articles, designs, plans, drawings and photographs are all copyright VERLINDEN PUBLICATIONS unless otherwise indicated. This publication may therefore not be reproduced in part or in whole without the written consent of the publisher, except in the case of brief quotations in reviews. The Publisher cannot be held responsible for unsolicited material which, if not accepted, will be returned only if postage and wrappings are provided. Photographs and articles accepted are paid for upon publication. If, for some reason, this publication is discontinued no refunds will be paid by the Publisher to subscription holders nor can the Publisher be held responsible for any damage resulting from the discontinuation of this magazine.

VERLINDEN PRODUCTIONS Modeling Magazine is printed in Belgium by Drukkerij DE PEUTER nv. Herentals. Color repro by SCANBO, Beerzel, Belgium

From the editor

In a recent editorial we commented on the difficulties presenting themselves to the injection plastic manufacturers, ever increasing development and mold costs, insufficient quantities sold to amortize those costs, etc. As a result, we can expect more reissues, some with an extra sprue to make a slightly different version or different decals and even just a different box. There also seems to be a trend of copying. We are seeing some manufacturers releasing a "New" kit and find it contains an exact copy of another manufacturers "old" kit and usually it is of poorer quality. And if that is not bad enough, they come with a higher price tag. In defense of those manufacturers, they are only trying to survive. If they continued to produce new high quality kits at old prices, soon they would all be bankrupt!



This situation has created alternative kit production systems with relatively inexpensive development and molding costs. These systems cannot be automated to the degree of the plastic kits, so the production costs are more expensive, however, the initial investment is much lower and the time required is much shorter, thus giving the manufacturer much more flexibility and the ability to deliver to the market items that were impossible in the past. As with anything new, there is a reluctance on the part of some to accept a different way of modelling. Resin, Photo etching, vacuum formed, etc., is certainly different from plastic when it comes to construction.

Just try to remember the first time you built a plastic kit. I don't know about you, but mine was a disaster. However, with a little practice, these new mediums become second nature just as the plastic did. Don't be too disappointed the first time you build a "New Wave" product, after you build a few kits, your skills will improve, you will learn how to work with the new materials, how to construct, how to glue, sand, convert, etc. As a matter of fact, if the present trend continues, you may have to learn these skills or do without new products!

For our part at VP Magazine, we will try to give you more and more "how to" information on using these materials. If you haven't tried one yet, get started! You may find you will soon be building better models than you did previously.

François Verlinden,
Chief editor.

Subscribe to the VERLINDEN PRODUCTIONS Modeling Magazine now and you receive 1 year (4 full color issues) of VP Magazine for



Worldwide

Europe 1000,- Belgian francs
Outside Europe/Airmail 1200,- Belgian francs

I make my payment by International Postal Money order (Belgian Francs only)
(only the above method of payment is accepted).

I want to start my subscription with

Volume Number

English German * French ** Italian **

* Available as of Volume 2 - Number 1

** Available as of Volume 2 - Number 3

Name _____

Street and n° _____

City and postal code _____

Country _____

VERLINDEN PRODUCTIONS

Ondernemersstraat 4,
KMO-Zone Mallekot
B2500 Lier/Belgium



For North and South America

U.S. - 3rd Class - \$ 19,95 U.S./1st Class - \$ 26,95
Canada/Mexico Air - \$ 29,95 / Surface - \$ 26,95
Foreign Air - \$ 39,95 / Surface - \$ 29,95.

Subscription begins with current issue.
Back issues available direct by mail order (not by subscription).

Name _____

Address _____

City, State, Zip _____

Country _____

Write or if paying by credit card call (314) 567-6266 M-F 8AM to 5PM C.S.T. for your subscription.
Checks must be U.S. funds drawn on U.S. banks.

Credit Card Information _____

Cardholder Name _____

Signature _____

Card Number _____

Expiration Date _____

VLS

811, Lone Star Drive
Lone Star Industrial Park
O'Fallon, Mo 63366
USA. - Tel. (314) 281-5700 - Fax (314) 281-5750.

CHECKPOINT 'Am Bahnhof'

"At the station"



A German Panther Ausf.G in defense of a train station or
An updated Nichimo Panther kit
and a Trophy Ruined Train Station
combined with VP figures



Anny battles in WWII (or any war for that matter) have been fought to take key-positions such as bridges, fuel depots or train stations. Whoever controlled these locations, controlled the movements of the

enemy troops to a certain degree. Whenever a battle was planned, these landmarks were encircled with a "red marker" on the planning maps, because they were the first to be taken. Although troop movements were kept secret and messages related to an upco-

ming attack were transmitted in code, army intelligence people were able to decode these messages (with the resistance people doing their share of the work), and were sometimes able to inform the high command of what the enemy had planned. They then could move their tanks and infantry to either take the targeted areas first or regain possession when enemy troops were already in control.

Despite the fact this station (which could be situated anywhere from Berlin to Normandie or the Belgian coastline) was to be taken intact, it could not be prevented from being damaged, which was the whole idea behind this scene of a damaged train station with a German tank defending it.

THE PANTHER AUSF.G MODEL

This early Nichimo model has been a long-time favorite of many modelers specializing in German WWII AFV's. That's one of the reasons why we picked it to fill the open spot on this diorama. It is basically a good kit which does, however, require quite some extra detailing to match the real thing. We previously described the necessary updates in "THE VERLINDEN WAY" Vol.V which you probably have close at hand. To add the "Zimmeritt" this time we used a method somewhat out of the ordinary, with amazing good results. What is usually recommended is to use a Pyro-



graph etching tool, which is actually a kind of heat controllable soldering tool used to engrave the plastic of the kit. Now, we discovered few modelers have such a Pyrograph etching tool (which is not inexpensive) or, not all modelers who own one are able to use it properly. This could mean it isn't functioning the way it should be or that the user is lacking practice. We would like to describe an alternative way to have your model decorated with this anti-magnetic paste (which was used in WWII to prevent magnetic mines from sticking to the tank). We measured the area where we wanted some zimmeritt, cut a piece of .10 mm plastic sheet to size and started scribing the zimmeritt pattern on the piece of plastic sheet. This was done by securing it with tape to the table and using an etching tool or scribing knife and a metal straightedge. These zimmeritt patterns differed from one tank to another (because they were textured by hand and without the use of a pattern description). We advise to check some photographs in books on German tanks or take a close look at our model. Once the pattern was scribed, the sheet of plastic was sanded to minor thickness (yes, we too had some gaps and broken edges, but this was just what we were looking for), and glued in place with ordinary plastic glue. Once it has been positioned on the tank it can still be cut and removed if necessary. Trim wherever needed and clean with Scotch-brite. The side-skirts of the tank were cut from .10mm plastic sheet (See Fig.3). The front plate of both sides measured

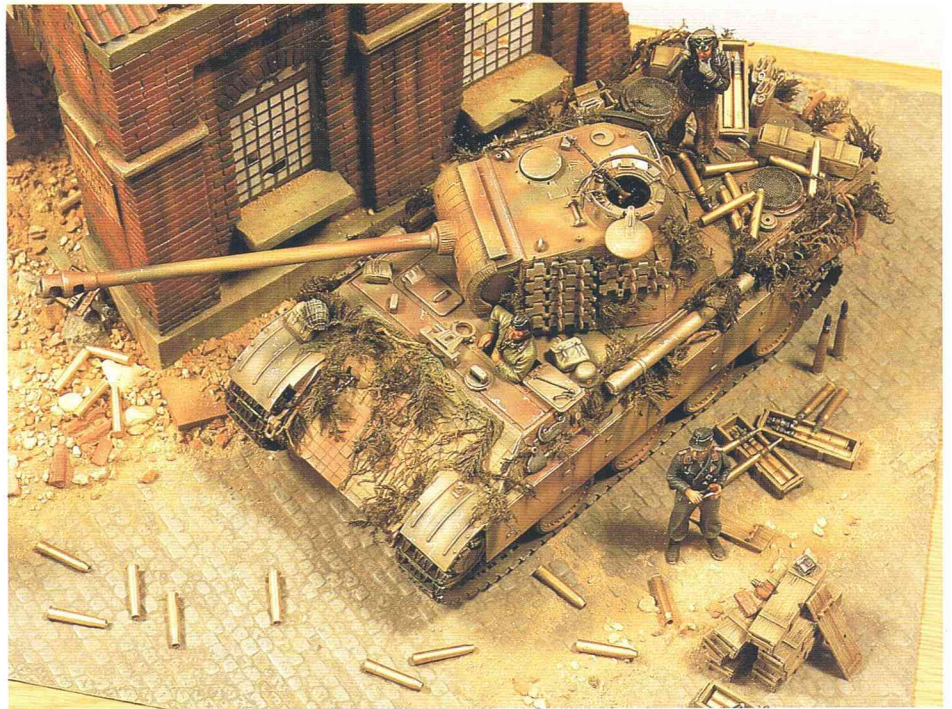


Fig.2 A birdseye view of the Panther and its surroundings. Note the realistic cobblestones.

del Master's Wood 1735 overall which is actually a lighter shade than the indicated colors. This was done for a simple reason. Before applying the base color one should consider the effect of the wash on the misted basecoat. Therefore, unexperienced modelers should test the colors, the effect of the washing fluid and the subsequent highlighting on a scrapbox model and look for the perfect combination. Only then

while spraying camouflage patterns. A little less than usual Raw Umber was used for the wash in between painting and highlighting. The final color effects were established with the use of pastels. Careful handling of the model afterwards is advised to avoid unsightly fingerprints destroying the appearance of the model. Do not attempt to coat your model with varnish afterwards because it will ruin the effect of the pastels.

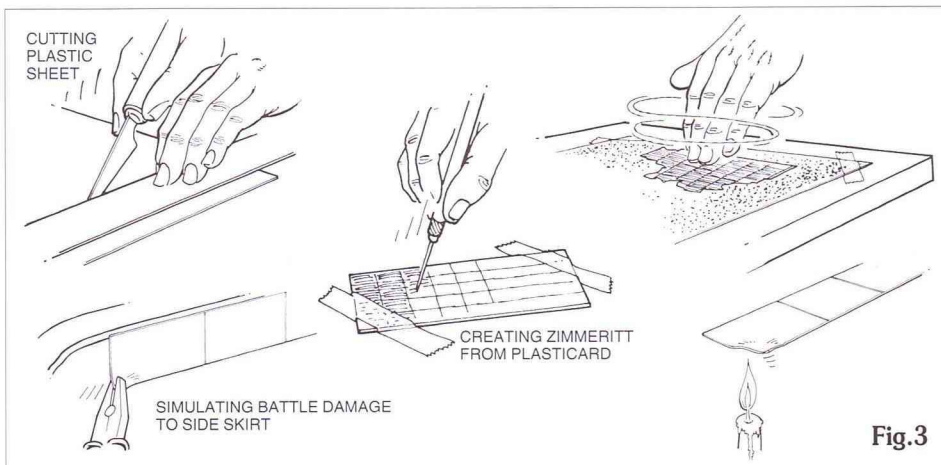


Fig.3

19x35mm. Four plates of 19x33mm were added to the left side of the tank and five plates of the same size were glued on the right. Plastic strip cut to size was used to simulate the skirt attachments. Plastic strip, rod, copperwire and lead foil was used to add the rest of the detail.

PAINTING AND FINISHING OF THE MODEL

Contrary to the Nichimo instruction sheet, the model was painted with Mo-

should they attempt painting the actual model. They should do so with every model they build until they can rely on experience while choosing colors. Returning to our model, two more Model Master colors were used for the camouflage pattern. Rust 1785 and Dark Green 1710 were spraypainted to the pattern shown in "Panther in Action" published by Squadron Signal. Previous attempts with this brand of paints showed better results were obtained when more thinner was used

THE BUILDING

The building is a combination of two Trophy novelties, a Ruined Train Station (N°20017) on one hand and Roof Tile Section (N°20019) to complete the upper basswood construction. Painting buildings such as this one has been described in previous publications, but it always comes down to applying a basecoat of Brick Red, Red Crimson or a similar color; washing with a mixture of dark oil colors and highlighting with the base color plus some white or grey. Subsequent experimenting with pastels will give each building a different look. A roof was constructed from balsa and basswood, sections of Trophy set 20019 and a strip of lead foil (to simulate the ridge) completed the ruin. It used to be hard to find debris to use in 1:35th scale, but the new TROPHY DIORAMA SYSTEM range features damaged brick wall sections, roof tiles, floor tiles, concrete sections etc. in many different colors to finish your dioramas. The entire base consists of sections of Trophy vacuformed cobblestones cut and fitted together.

All the sections were washed with dirty brown paint and highlighted with various shades of gray.

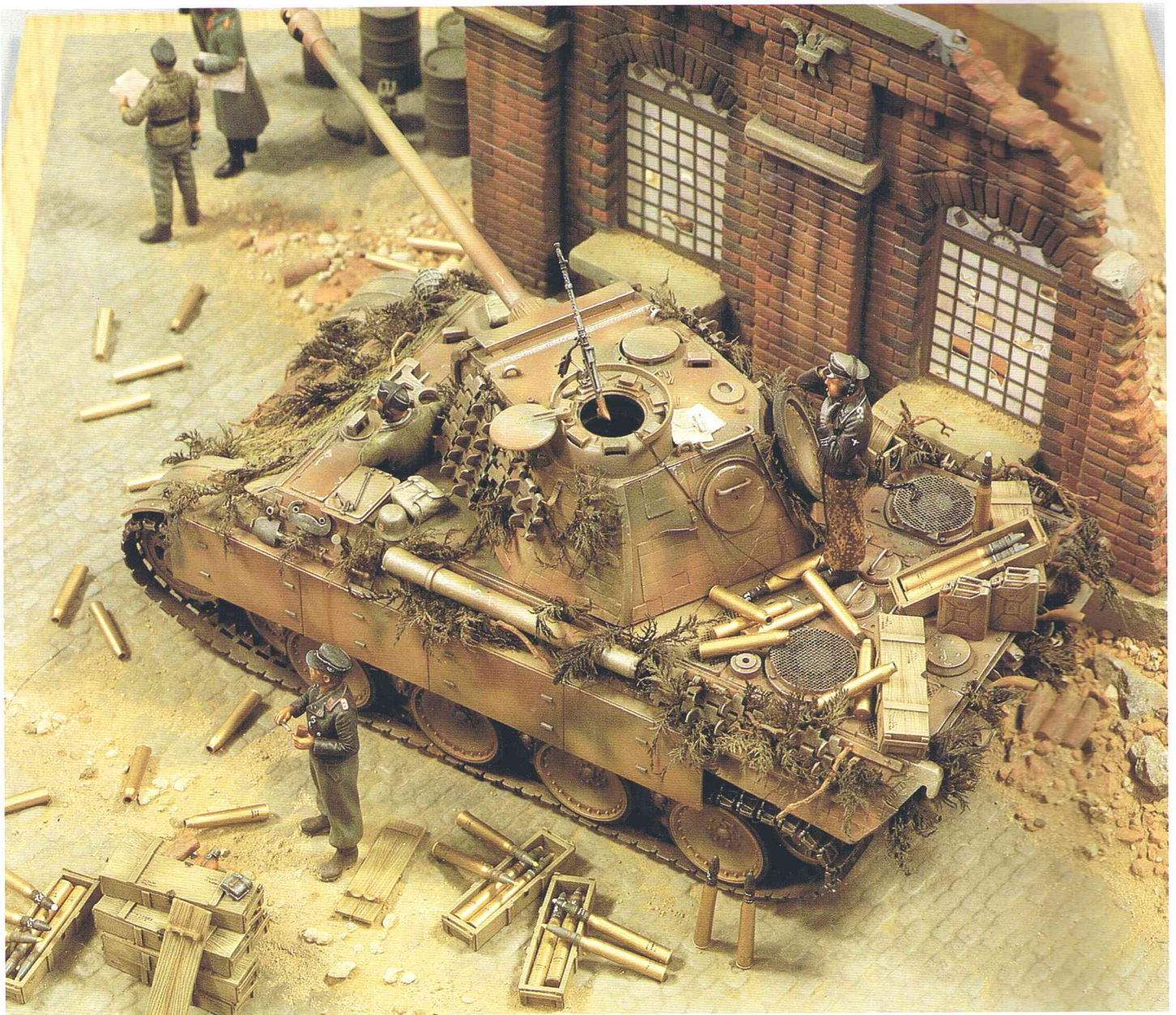


Fig.4 Defending key positions required lots of ammo. All shells, cartridge cases and ammo boxes are from VP.



THE FIGURES

Six VP figures were used for this diorama, two inside the tank, one standing next to it and three more in front of the building. The tank driver is a stock German Panzer Crew WWII figure (Set N°136), the tank commander standing on top of the Panther has body parts and head taken from the same set with legs and boots from the German Tank Commander WWII. The same lower parts were used to construct the figure next to the tank. His body parts are from Panzer Leader "Sepp Dietrich" with a head taken from the German Heads WWII (N°1 & N°2). The middle figure of the triumvirate is the German General WWII (N°391) with the figure on the right of him being a stock WWII German Tank Commander. The last figure on the scene holding the map in front of him is a combination of legs from the German Tanker Refueling, the torso of "Sepp Dietrich" and a head from the previously mentioned sets of WWII heads. The already available figures can be combined with the recently released German Tankers WWII. Countless combinations can be made using almost identical parts with a totally different figure as final result. All other accessories on the diorama are from VP with exception of the foliage which can be found in a Model Railroad Shop.

Fig.5 A German triumvirate discussing tactics. Note the painted details on the uniforms.



Fig.6 & 7. Figures are very important assets to any diorama. The choice of 1:35 figures is almost unlimited these days. Almost the same can be said of diorama accessories such as the TROPHY release shown in the photo below.





"Alte Kameraden"

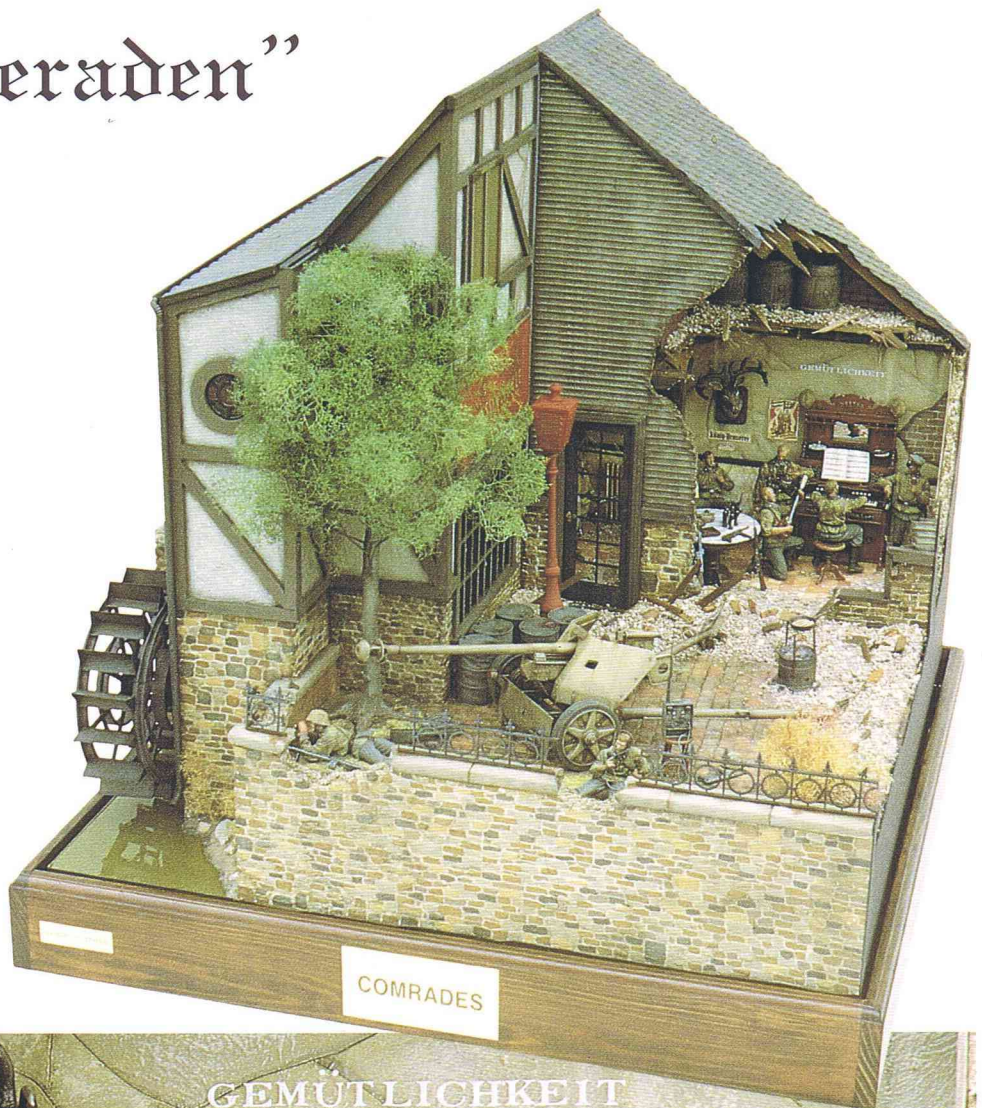
(Comrades)

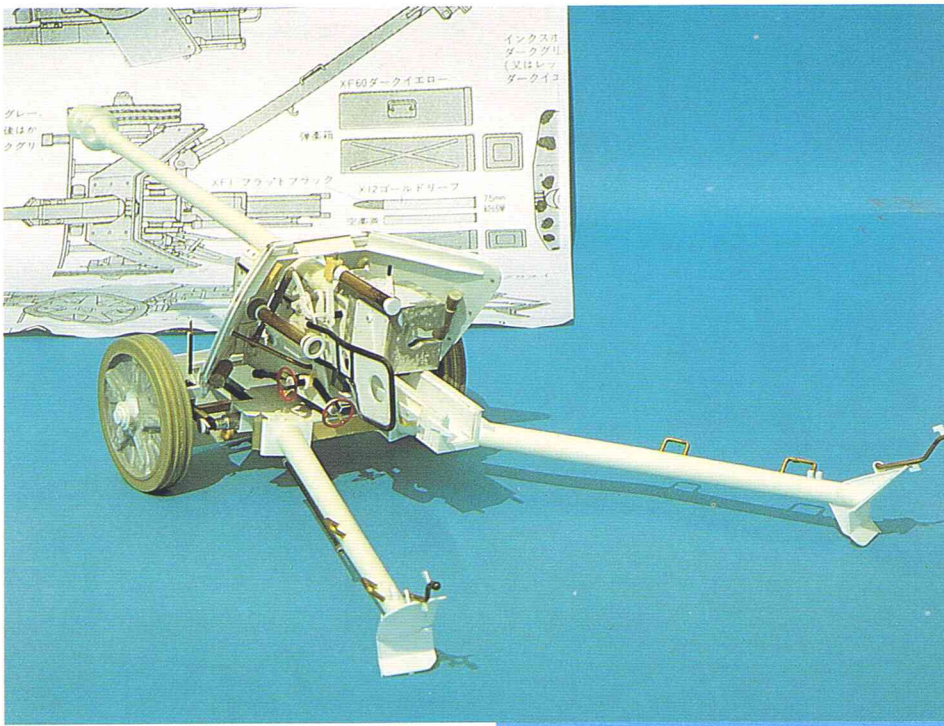


by Bob Letterman

To the delight of a war weary panzerabwehr unit, they are ordered to set up an emplacement at a bombed out "Gasthof Wassermühle", (Watermill Tavern), and as luck would have it, there is still an ample supply of liquid refreshment on the premises. The war is almost over and even the elite Waffen SS have all but given up hope.

They dust off the piano and mandolin, tip the beer steins and wine glasses, and for a few brief moments, the war is but a distant memory.





The 75mm Pak 40 prior to painting. All kinds of materials were used to simulate the various parts; rod, plastic strip, brass tubing, copper wire, etc., all made possible using Superglue. Once painted, all these parts have a different appearance because of the surface, creating extra depth. Weathering small detail was executed with extreme care.

The converted figures and organ test posed prior to painting.



The toilet fixtures prior to installation (Note they are in dire need of sanitation).



What started as an experiment to explore the possibilities of dioramas with the VP 120mm range became the most enjoyable project I have built so far. 120mm opens up possibilities in dioramas undreamed of in smaller scales. The realism is dramatic and you are very quickly caught up in the scene as it unfolds. As a result, many new products in this scale will be forthcoming, some of which are included in "Comrades". This diorama was somewhat inspired by a beautiful 1:35th diorama, "Le Chat Bleu", built by Arturo Flores of Cuernavaca, Morelos, Mexico which I had spotted at the I.P.M.S. National Convention in St. Louis, Mo. USA. It is featured in American Graffiti section. Thanks, Arturo, you can include me as one of your fans!

THE BUILDING

The construction of the building is corrugated cardboard laminated with artists mattboard. Basswood beams inside and

out, artists paste "stucco", and the stones being made with artists paste as well. The roof is Trophy Slate roof, and the large stained glass window was made from "Techstar Large mesh, filled with Superscale Kristal Kleer, and then stained with glass stain from a craft shop. The doors are from a doll house shop, gutters are soda straws, and the water wheel is plastic sheet and strip. The coo coo clock from plastic stock and the parts box, and after searching for some time for a deer to use for the hunting trophy, I gave up and sculpted it from epoxy putty. The walls are VP wallpaper and Trophy Marble with basswood trim. The toilet sink and comode, as well as the table, chairs and piano are plastic kits from the doll house shop. The mandolin was made from plastic sheet, epoxy putty and fishing line. Posters on the walls are from VP German propoganda posters. The cobblestone courtyard was made from Trophy tiles, grouted and stained.



The Horst Wessel Anthem being sung as it was in happier days.

The Barrels, Drums, Brazier, wine bottles and lamp post are new releases from VP. The skillet from the doll house shop and epoxy putty sausages. The sign is matt board and hand painted.

The tree was made from a real tree limb with an epoxy base and roots, and the new VP Trees and Hedgerows material inserted in holes drilled into the wood and then sprayed with multiple colors of green. The bush is the same material. The shutters are sheet and strip plastic with VP Iron works and the iron fence is a doll house item.

THE CANNON

The 75mm Pak 40 was scratchbuilt from plastic sheet, strip and tube, the barrel and trailing arms were turned on a lathe as well as the tires. The pattern for the wheels were made from sheet plastic and then the final part was vacuum formed from the pattern. References involved blowing up 1/35th scale plans to 120mm, several books on the weapon and the Tamiya and Italeri 1/35th kits of the same gun. The shells are part of a new VP accessory set.

THE FIGURES

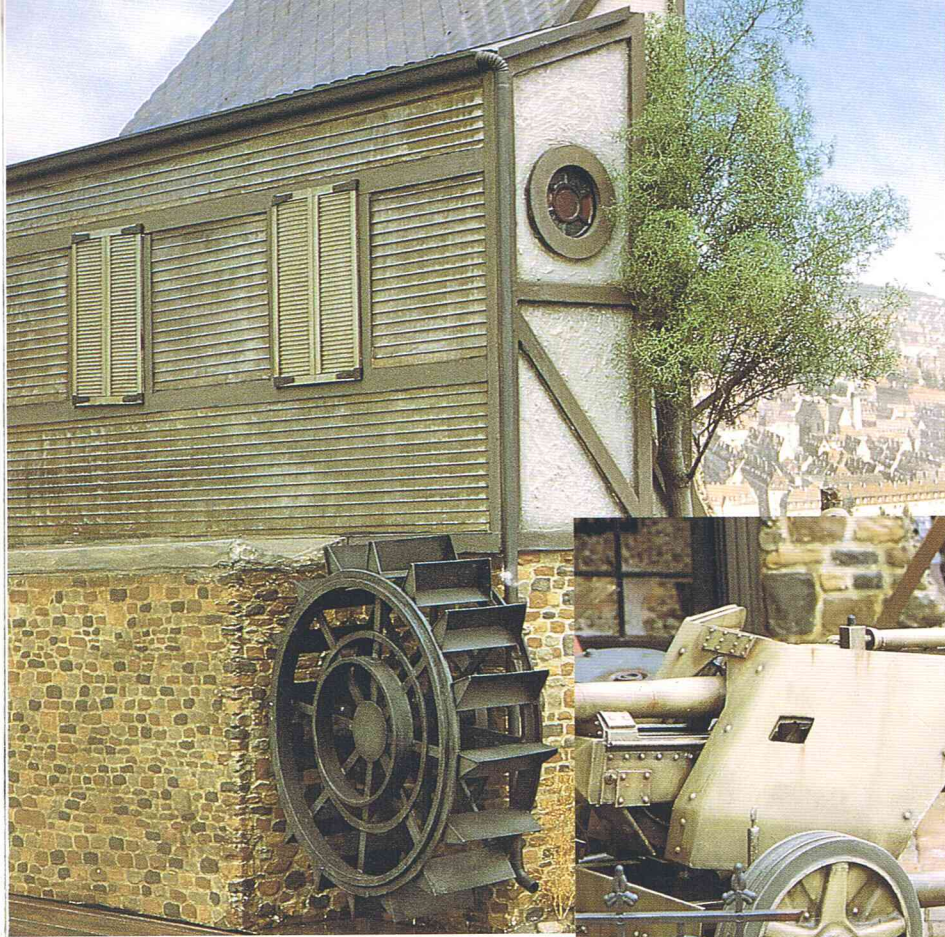
The radio operator and the spotter (In the courtyard) are the VP SS Machine gun team modified with spare parts and the radio operator has a head from the German head set. The radio is a new VP release.

The four figures around the piano are all from the SS Infantryman and SS Officer, modified in pose with epoxy putty. Their faces were modified by grinding away their eyebrows, drilling a large hole at the mouth area and then rebuild

**Herren (Mens) toilet and the "Schütze"
has found a new vintage.**

Overall side view of "Comrades".





Stonework and waterwheel details.

Details of the 75mm cannon, VP Lantern, and stained glass window.

The VP Radio and the converted operator.



ding eyebrows, chins, teeth, lips and tongues with epoxy to simulate singing. The figure entering the room is the German Sniper, converted as the others. The weapons and accessories are from the figure kits and the both German infantry equipment sets. Several of the figures received new hair do's from epoxy. The details of these conversions will be discussed in depth in an upcoming book entitled "The System" by Verlinden and Letterman to be released sometime in '92. This book will deal with virtually every aspect of military vehicles, figures and dioramas in beginner, intermediate and advanced format.
Bob Letterman



Fall Gelb (Operation Yellow)

The Invasion of France



The scene is May 1940, in France. Advancing German Panzer units are halted after French Sappers demolished a bridge in the path of the onslaught. The German troops relax while waiting for a decision from command. The first

German engineers arrive to assess the damage. To make matters worse, the retreating French have placed yet another obstacle in the form of an unservicable Renault tank in an attempt to slow the advance of the oncoming Panzers.



Fig 1 The Trophy Bridge System Kit as it comes out of the box.

In war, there are few objectives as critical as a bridge. Their demolition can slow the enemies advance, cut supply lines and prevent retreat actions. For a diorama, a bridge scene is always impressive as it has an imposing form with interesting textures and color, and is ideal for displaying vehicles.

The water always lends a more interesting aspect to any diorama. Bridges have been the subject of many good



Fig 2 Two souvenirs of the Blitzkrieg. A French Poilu helmet and a Renault R-35.



Fig 3 The Blitzkrieg temporarily loses it's momentum. Note the wide array of materials typically found in a battle area.

models, however, until now, they had to be scratchbuilt as little was commercially available. Trophy models has released a bridge that is not just a model but a complete system. By purchasing one or more kits, the modeler can build a bridge to virtually any length and with a variety of configurations, intact or blown at one or more locations anywhere he chooses along the span. The kit includes a complete, intact span, embankment walls, and an optional demolished span. With some imagination, the possibilities are endless.

In this diorama we used one complete kit plus two blown spans and created the remains of one pier damaged at both ends. Although using a total of three kits, we have enough elements left to build a scene with both embankment walls and an intact double span for a future project.

Assembly is simple with no problems other than filling joints where the elements are fitted together. Painting was done with various shades of Humbrol grays, sand and brown.

A baseplate is cut to the desired shape and a strip of wood 1 cm wide is glued around the edges to form a frame. A solid block of styrofoam is cut to size with the same height as the bridge floor, sanded smooth and will serve as the shoreline that will be veneered with the embankment walls.

The base frame is masked with tape and the base coat for the water of dirty brown is airbrushed. (Humbrol matt 29, matt black and dark green). Next, overspray with a cloud pattern of light olive brown. This will create a shadowy



Fig. 4 The diorama photographed against a natural backdrop creates the illusion of reality.

Fig 5 A Sapper uses wooden planks to examine the damage to the center pier of the bridge. Note the loose cobblestones scattered along the bridge as a result of the demolition

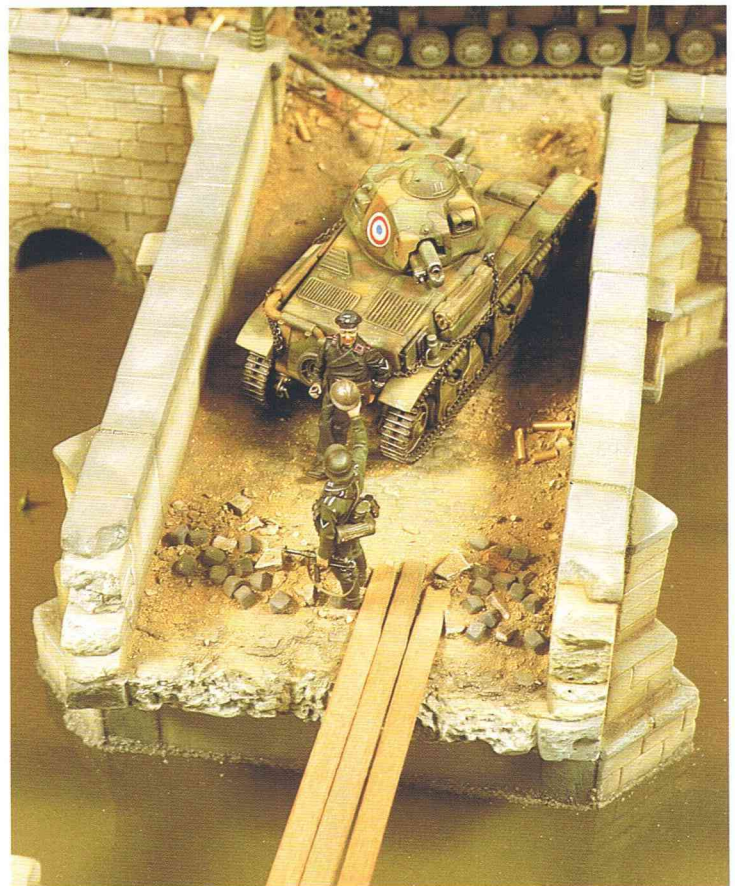
appearance that will simulate depth. After drying, several coats of clear gloss or polyurethane are airbrushed on. The bridge, pier and embankment walls are attached to the water and shoreline with white glue or other suitable adhesive and any gaps can be filled with Porion, Celluclay or patching plaster.

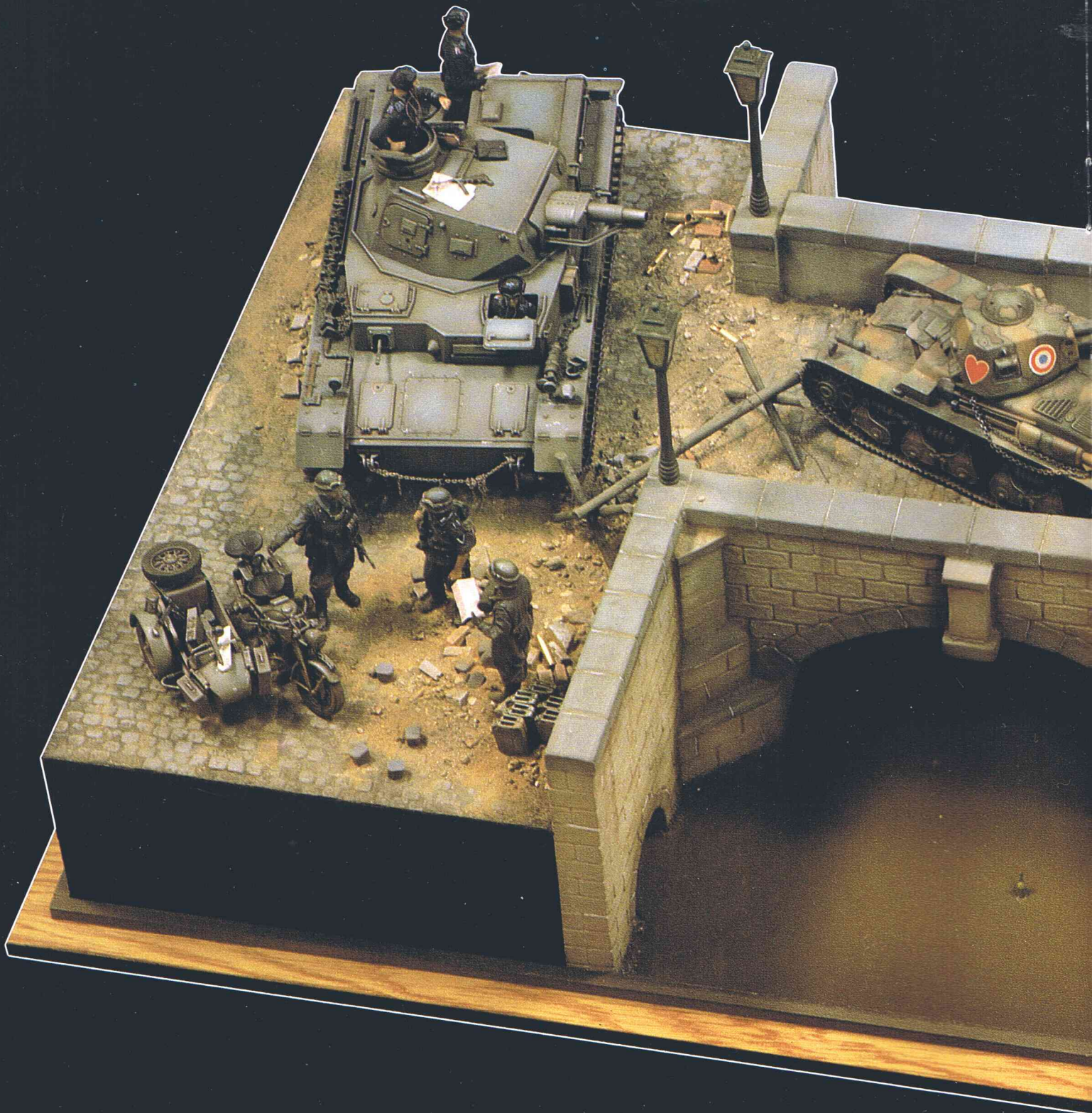
Next, Trophy Vacform Cobblestone sheets are cut to the shape of the road surface of the shore as well as the bridge, glued in place and washed with raw umber artists oils. Rubble is placed here and there by using a ground material, Porion(Europe) or Celluclay (USA), Trophy Bricks and Cobblestones to simulate the appearance of a battlezone. After drying, a generous amount of pastels was added to simulate dust.

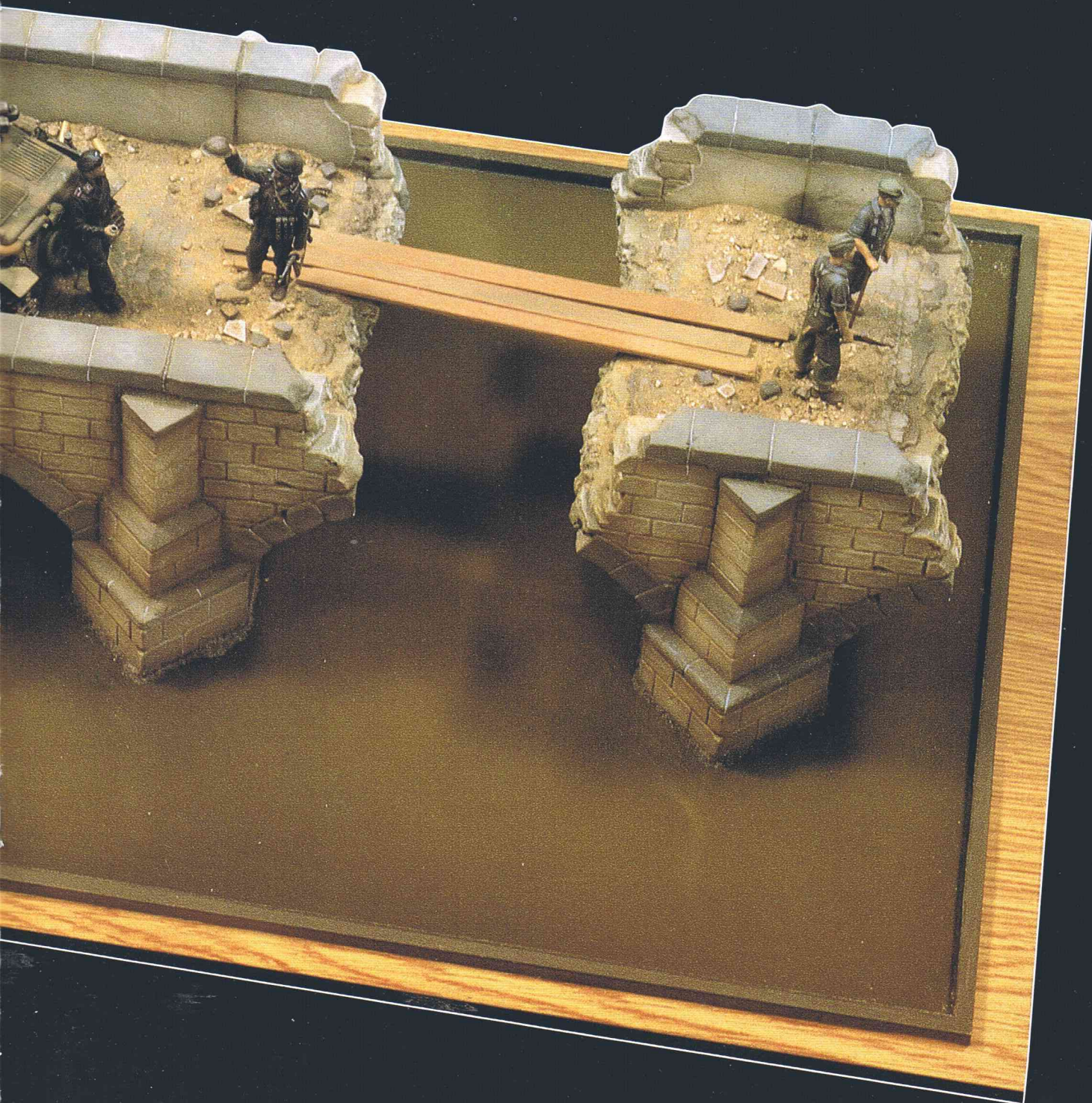
The vehicles halted at the embankment are the Tamiya Panzer IV and the Italeri Zundapp motorcycle. The Heller Renault was appropriated from an old collection and now has its final resting place.

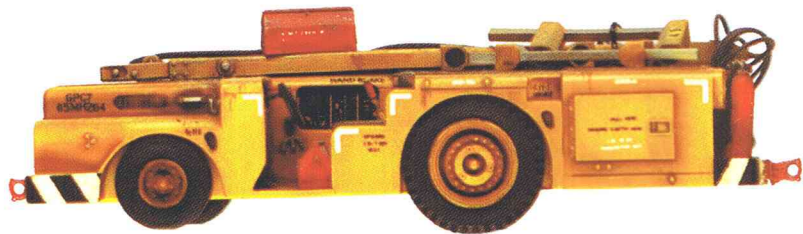
All figures are VP new releases built out of the box, early war German tank crew, German infantrymen, German engineers, Dispatch riders and Feldgendarmes.

After the diorama was complete a light dusting with pastels blended the contrasting colors on the scene to give a natural appearance.









In Focus: The US NAVY's GPC or "MULE"



No airfield traffic in the world compares to the hectic tracking and towing on board an aircraft carrier. Aircraft are frequently moved from bow to stern every time a mission is launched or when retrieving inbound aircraft is to commence. For this purpose, small low profile tractors are being used, officially called GPC's (for General Purpose Cart) but

Fig.3 A mule parked in front of some aircraft on board the USS FORRESTAL. The yellow letters on the front louvers read FID (First In Defense), the Forrestal motto.





Fig.4 Ample space for the mule driver with monitoring panel in front and turbine operating panel on the right hand side. Note the structure of the hose on top.

Fig.5 Blue Shirter enjoying a short break. Note the anti-skid upper surfaces of the craft which is often used as maintenance platform for those hard-to-reach places.



Fig.6 They don't stay clean for too long but freshly repainted black 4 is heading for the bow of the Forrestal, towing an F-18 Hornet and directed by a flight deck officer.



nicknamed "Mules". They are operated by the so-called "Blue Shirts" who miraculously slalom their vehicles across the limited space of the flight deck (which is definitely one of the most dangerous places on earth).

Their job is most envied by the rest of the "groundcrew" because these mule drivers are allowed to sit down during the job and even take a nap when they're not needed.

The tractors come in many different configurations because they're not only used as tow tugs but can carry a turbine

Fig.7 Retaining its black/yellow safety markings, this "fire tractor" features two different tanks holding two different fire extinguisher fluids.

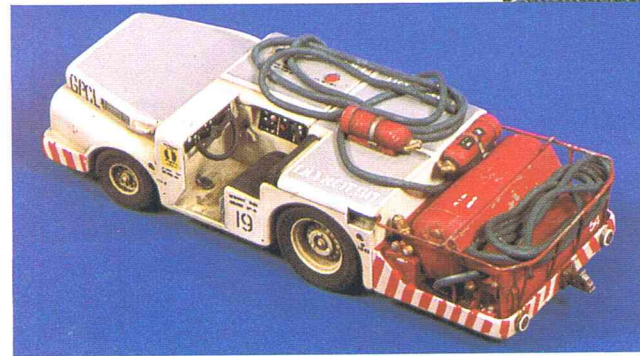
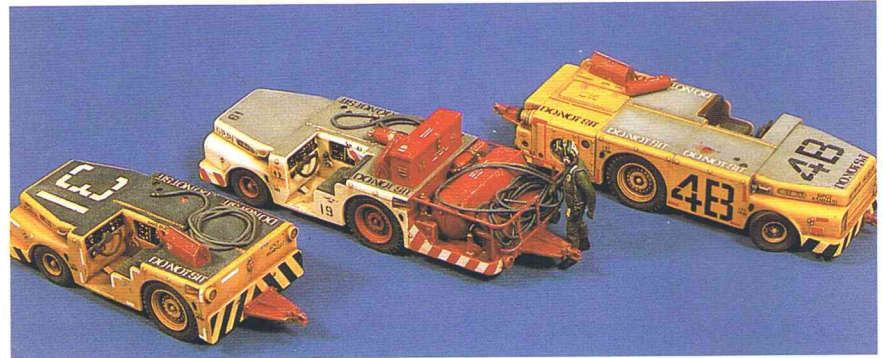


Fig.8&9 Beautifully resembling the real thing, VP's tractors on 1/72nd (left) and 1/48th (below) have been painted in different color schemes and are decorated with different markings. Markings and numbers on the enclosed dry transfer sheet allow numerous combinations.

unit attached to the rear for servicing. Some even have a huge tank fitted to a platform attached to the rear bulkhead, complemented with some hoses and valves, turning the tractors into fire fighting machines.

No two mules are alike, all have different markings or have been painted in a different color. Today's tractors already have been, or are in the process of being painted white, replacing the yellow color with one simple explanation: the US Navy Health Commission discovered an intolerable amount of lead in the yellow paint.



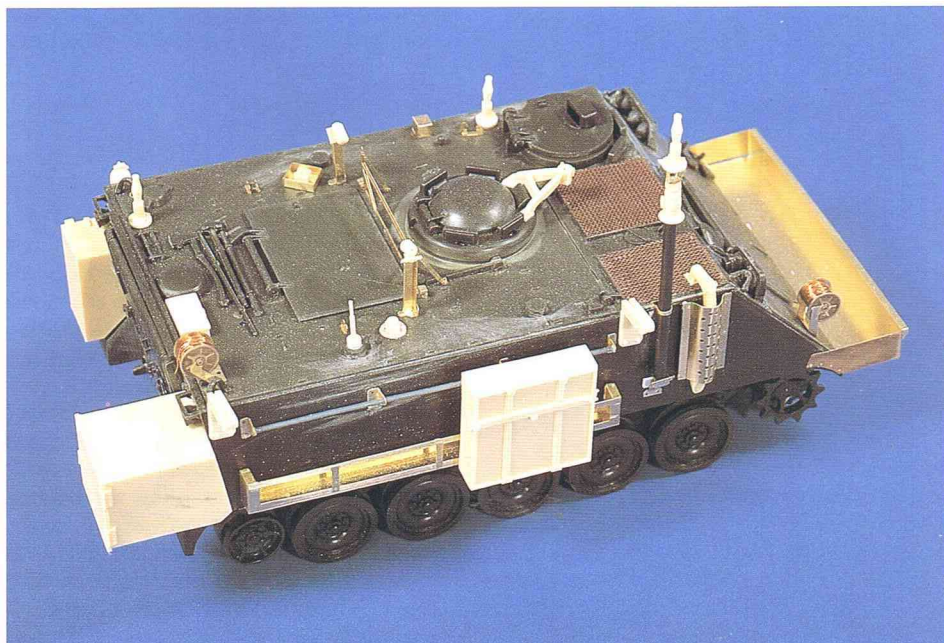
VERLINDEN PRODUCTIONS was the first to release accurate replicas in both 1/48th and 1/72nd of both types described on these pages. They are all made of resin and come with many extras such as flexible tubing to simulate the hoses, fire extinguishers, dry transfers and the 1/48th mule even has a figure included.

VERLINDEN PRODUCTIONS would like to express their gratitude to Rear Admiral Walter J. DAVIS, Jr., Commander Carrier Group Six, CPT. Stanley F. BLOYER Commander Air Wing Six, CPT. Robert S. COLE Forrestal CO and Lt. John F. KIRBY for their assistance.

Fig.10 Close view on the valves, pressure gages and spherical pressure unit. Note the dual spray-nozzles on top of the hoses and the deletion of the tow pintle at the rear.



Tracked Headshed ! The Israeli Army M-113 Command and Communications Vehicle



Next to the USA, the Israeli Army is one of the World's largest users of the M-113. Nicknamed "Nag'Mash" or Chariot, it is a valuable and very reliable workhorse of almost every Israeli Combat unit.

When it comes to Israeli variants, modelers never have to panic, worrying about this rack or that box belonging here or some other un-important detail. With a little research you will find that no two M-113's in the Israeli Army are exactly the same. With the ever-expanding range of VP conversions and accessories in this area, it is possible to build almost any type you wish, just by switching this or that resin and photo-etched part. With the introduction of VP Kit N° 550 named in the subtitle of this article, yet another interesting Israeli M-113 variant is possible. This particular type is used by Armor Commanders to provide "up-front" command and coordination of their units in combat situations.

Fig.2 The basic parts of conversion set N°550. Note the unusual shaped rear storage boxes and folding Map Table on the right side of the vehicle. Also note the large antenna pole (included) and exhaust pipe cover just in front of the right side rack.

Fig.3 Left front of the unpainted model showing to good advantage the larger photo-etched parts forming the main stowage racks. Also note smaller details such as the trim vane locations which have been covered with plastic details, wire spool on right front slope and hand-made plastic mounts for the side storage racks.

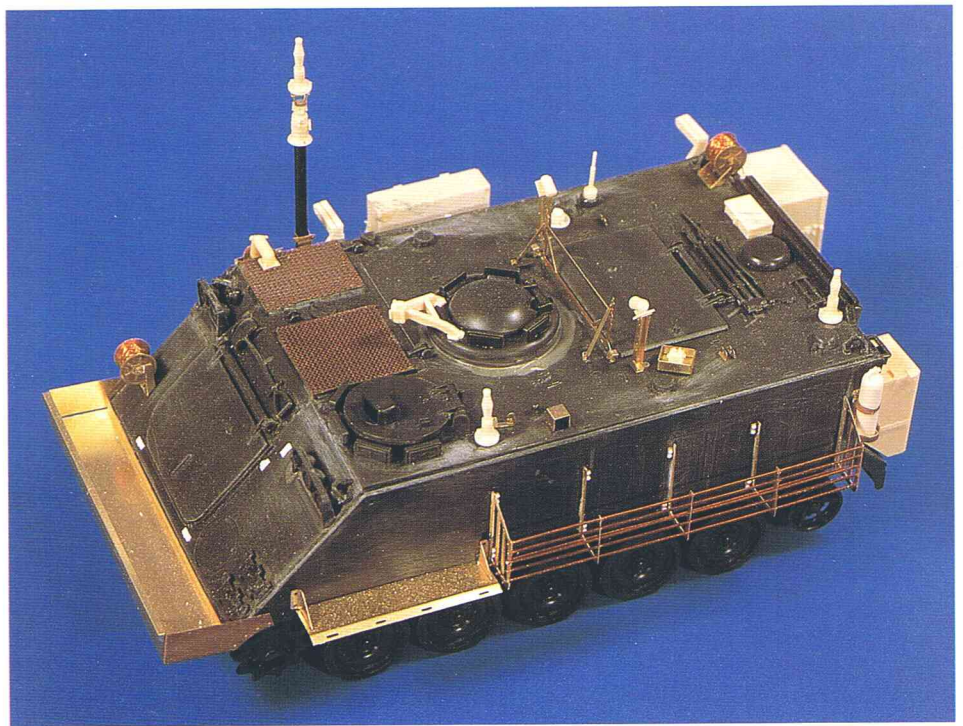


Fig.4 Upper left front of the real CCV. Pay close attention to the smaller details which make the whole picture. Note how the tie-down straps are fitted and the single headlight, also the white on black registration plate partially covered by the forward straps. These embossed ID plates are designed to withstand a destructive fire which would certainly burn off painted-on numbers, making identification of a knocked-out vehicle very difficult. Two are usually carried, one on each side of the vehicle.



Fig.5 Note the unusual shapes of the storage boxes and how they are mounted to the vehicle's rear end. The registration number is repeated on the left rear mudguard. ID plates in this location are painted instead.



Fig.6 The finished model in all its glory. Basic color is Humbrol Matt 29 followed by carefully drybrushing. VP Lead Foil (N° 50) was cut into smaller strips and glued to make a type of harness for extra equipment on the forward left side. To top everything off, a resin VP .50 Cal MG was added (N° 372) to the Commander's cupola.



Fig. 7&8 Overall right front view showing the single headlights and trim vane handle which has not been removed. Note the positioning of the exhaust pipe and large antenna base, also how the nose-mounted stowage box forms a type of ram.

The main antenna base can be made from a section of plastic tubing, provided in the VP Kit. Note the lighter color of the exhaust pipe upper part.

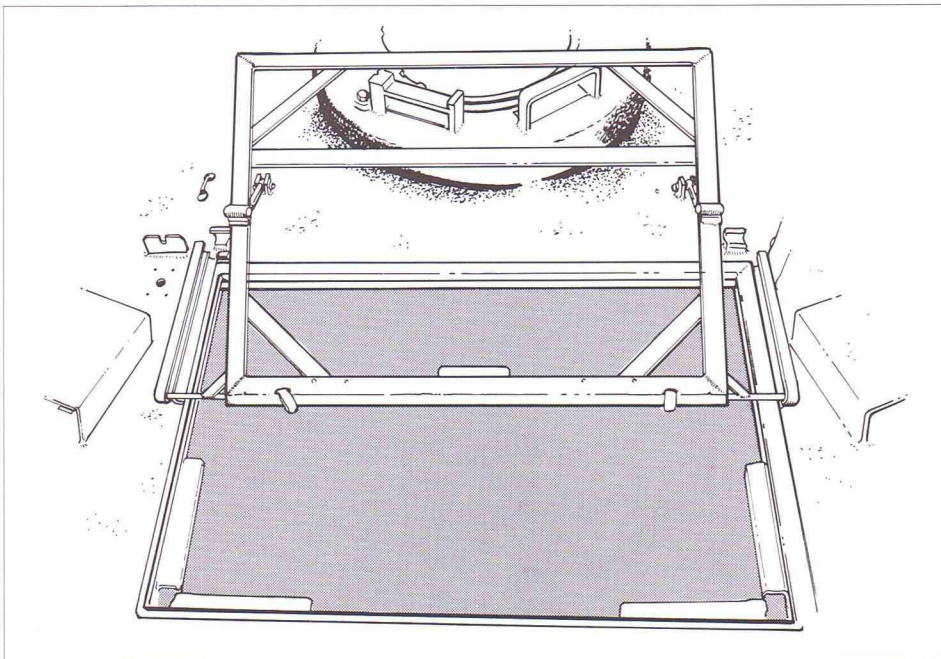
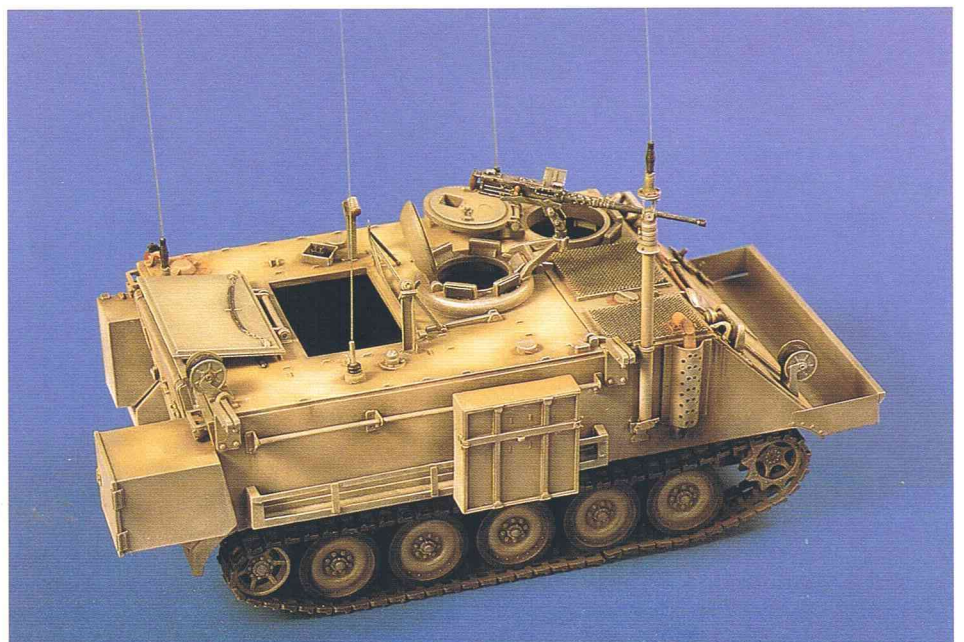


Fig.9 The Map-Table and bracing in detail which is provided in the VP Kit as a photo-etched part.

Fig.10 The finished M-113 model with the VP conversion installed. Once painted, the various update parts can no longer be determined, but it is easier now to make out details, especially the forward antenna mast and mounting. Because of its nature, this vehicle is fitted with no less than four different antennas, all made from stretched sprue. Two telephone reels are carried, one on the front right slope and another on the rear right upper deck. Mount and reel are photo-etched parts while copper wire was used to simulate the wire. Instead of the .50 cal MG, an FN 7.62mm MAG can be installed, also available from VP.



Facing the

"Blessed One"

Edited by



A 120mm Vietnam scene

By Terry ASHLEY
Australia

I have always had an interest in the Vietnam War and with the release of Verlinden Productions' 120mm range of figures and weapons from that era, I started to plan a larger diorama.

Initially the figures were painted as separate figures, each being slightly modified to make them different from the standard kit.

As the range of figures grew so did my plans, all that was needed was something to add to the figures as there is not

much in the way of accessories available in this scale.

When a friend turned up a large Buddha statue (bought during a trip to South-East Asia), along the lines of Verlinden's Buddha in 1:35th, the diorama was born.

The scene is set somewhere deep in the jungles of Vietnam near the Cambodian border. A patrol has just stumbled upon an abandoned temple and are taking a break, to refresh and report back to base.

THE FIGURES

The figures are a mish-mash of various figure parts plus some modifications and additions.

Figure 1 M60 Machine Gunner

The torso is from kit N°466 "Airborne GI" as are the arms, the right being modified to take the M60 (Kit N°502). The legs are from kit N° 458 "Radio Operator", with a head taken from the "bare heads" set. The sling for the M60 is made from lead sheet.

**Figure 2 RTO
(Radio Telephone Operator).**

This is the most heavily modified figure, being converted to a kneeling position to add a bit of animation instead of having all standing figures.

The torso is from a "Radio Operator" kit, with the arms from the "Airborne GI" kit, suitably modified to fit.

The legs are also from the Airborne kit, firstly using a razor saw the two legs are separated and then cut at the knees.

After removing enough of the leg to get the required position they are then secured with epoxy glue and the resulting gaps filled with excess resin pieces and body filler putty.

It is then a process of sanding to shape and adding new cloth folds to correspond with the new positioning.

The head is from the Airborne GI with a lead sheet towel added around his neck.

Finally a rucksack frame was built from thin rod solder (very easy to work with and to obtain natural bends) to carry the radio and additional gear.

**Figure 3
GI with Flack Jacket**

The torso and legs are from kit N°445 "US Chopper crewman/ Vietnam", as is the left arm.

The right arm has the sleeve from the Chopper Crewman with the arm, M16 and head from kit N°466 "Airborne GI", these fitting together without further modification.

**Figure 4
Squad Leader/Radio Operator**

This figure is a stock standard kit N°458 "US Radio Operator/ Vietnam", the only addition being a towel around his neck made from lead sheet.



Fig.3 The relating position of the figures implies the expectation of a sudden attack from any direction. Units on patrol duty constantly faced the danger of being ambushed. The dense jungle vegetation made it very difficult to spot the "Charlie's" who knew all about effective camouflaging as illustrated in the TV series "Tour of Duty".

Figure 5 GI with CAR-15

The torso and the legs are from Kit N°466 "US Airborne GI/Vietnam".

Both arms are from kit N°458 "Radio Operator" suitably modified to fit the



Fig.2 The scene viewed from the Buddha's angle with a clear view on the diversification in ground work and plants used. Some useful plants or branches can be found in the flower shop around the corner which always makes a visit worthwhile.

new torso and also to hold the weapon. Some trial fitting is required to ensure the new arms will fit around his personal gear and the CAR-15 'sits' naturally in the hand. The head is from kit N°465 "Bare Heads" with a bush hat made from lead sheet.

All the personal gear, weapons etc., are either from the figure kits or from kit N°460 "US Infantry Gear & Weapons/Vietnam". All weapons have the barrels drilled out and slings added from

lead sheet. Painting was with oils for all flesh areas and Humbrol enamels for the uniforms and equipment.

In all, parts of 6 figures were used to make up the 5 used in the diorama.

**THE BUDDHA
and GROUND WORK**

The statue is a wooden Buddha unmodified from its original form and painted with Humbrol Enamels and weathered with oils.

This was mounted on a platform and walls made from foam packing coated with plaster, with the stonework engraved. Again the walls were painted in enamels and weathered using an oil paint wash.

Using the sandwich method for the walls results in the finished article being light in weight for its large size. (The diorama measuring 410mm square and 280mm in height.)

Next the groundwork was built up on a plaster base using various types of ground scatter/grasses to give a contrasting effect.

Small clumps of lichen were added and the plants, various commercially available plastic aquarium plants along with some of the Verlinden jungle plants, all sprayed with differing shades of green from dark on the undersides to lighter on top and toward the end of the leaves.

The clinging vines on the walls are clumps of coarse turf soaked in white glue and attached to the walls.

Additional vines and bits of tree branches were added using dried out root systems from various garden plants.

The finished diorama took a little over three months to build and the end result is a self-satisfying model.

Modeling Vegetation

Modeling vehicles, equipment and structures, being man made, is not too difficult, however, many times, recreating nature in a diorama can be the most challenging aspect of all.

The most common vegetation found on a diorama would certainly be ordinary grass.

Grass can be found in a variety of forms and colors. Generally, modelers are limited in materials to a single product, Static grass.

VP has 2 shades, summer and winter, and these can be used by themselves, mixed to obtain subtle transformations between the seasons or even a green area with dry or dead patches.

To apply static grass, begin by determining the areas you wish to cover.

This should be painted with an earth tone color such as matt 29 and left to dry. Using white glue and an old brush, paint the glue only on the predetermined area.

While still wet, generously sprinkle the static grass over the area until covered.

Depending on how dense you wish the grass to appear, when the glue is partially dry, you can press it into the glue, add more grass and make it very dense.

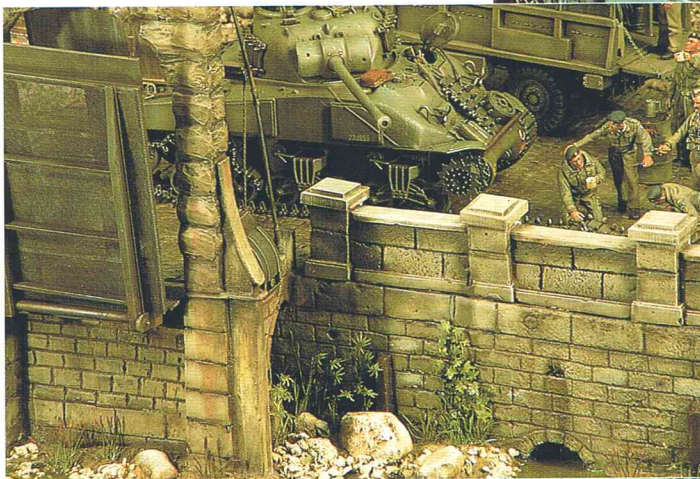
Blowing across the grass while the glue is still wet will accomplish the elimination of the excess as well as causing the grass to stand on end, appearing to be growing out of the ground.

After completely drying, you may go over it with a flat brush coated with matt 29. Wipe the brush almost as clean as if

you were drybrushing, but use a pressing action. This will make the grass more coarse and will reattach most of the loose particles to the ground cover. Afterwards, dry brush with various shades of green and yellow, such as French Artillery green, grass green and yellow. This will accomplish two things, create the natural color of grass and to thicken the individual blades.

PHOTOETCHED FOLIAGE

Many people avoid photoetched foliage as they think it is difficult to work with. Actually, it is quite simple. Begin with cutting it from the sprue, using a hobby knife or one of the new cutters designed for photoetching. Working from the stem or branch, form the leaves to a natural position, if necessary using a real plant or tree as a guide. Each leaf



A few pieces of photoetched jungle foliage at the bottom of the wall makes the difference in this view.

Fig 2 Photoetched Ivy (Techstar maple leaves).

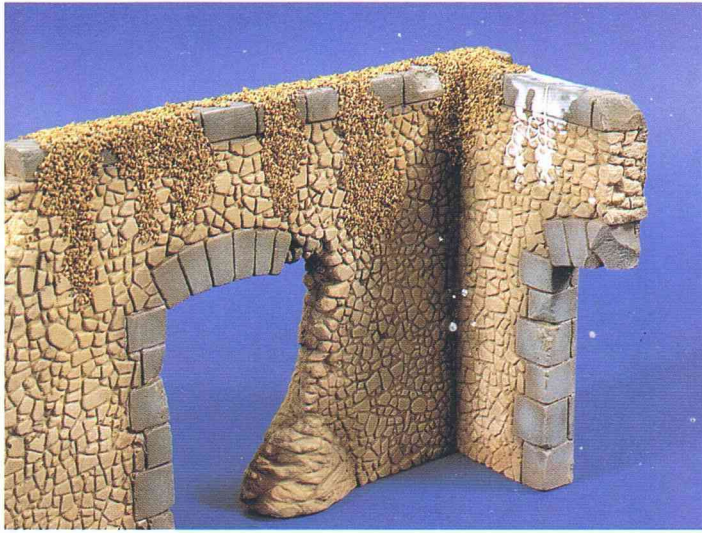


Fig 3 Tea leaf ivy (Glue applied and leaves sprinkled onto surface).



Fig 4 Tea leaf ivy after painting, (3 stages, from left to right).

must be shaped individually, leaves are not flat! Using a pair of hobby pliers, bend each leaf into a natural shape, it's not necessary to carry this process to extremes, but it is essential that no leaf is left flat. Once formed and shaped, spray with a medium to dark green, and if you wish, the stem or branch with a medium brown, and when dry, dry brush using the same colors as with the static grass. An alternative to drybrushing is to dust with light green pastels. Attach to the groundwork, tree trunk or structure with superglue.

TEA LEAF IVY

The ivy and moss covering many walls of Europe can be duplicated using simple tea leaves. These come in many sizes and shapes so you will have to look around to find the proper ones for your preference.

The application is the same as with static grass. Lay out the design on a wall to be covered and paint with white glue. Sprinkle with tea leaves and when partially dry, press the leaves into the glue and add some more.

When dry, paint the leaves with a very dark green diluted with turpentine, covering completely.

Allow to dry completely and then dry-brush as above.

TREES, BUSHES AND HEDGEROWS

Trees, bushes and hedgerows have always been a problem for the modeler. Until recently, the modeler has always been forced to use unsatisfactory substitutes for these items, usually from the model railroad field.

After years of searching for a satisfactory solution, VP has finally released a product that modelers everywhere will applaud. This product is real and is grown, harvested and dried specifically for the modeling market.

When the process is complete, the effect is a scale replica of mother nature

which can be used for trees, bushes, hedgerows and unlimited other applications.

The tree used on page 40, in the diorama "Comrades", is 40 centimeters in height and made with this new product. The Trunk was taken from a small tree branch, VP epoxy putty to form the roots and then holes drilled in the branch at a 45 degree angle from the top. After the epoxy was dry, it was painted and blended into the natural color of the wooden branch. The product was then inserted into the predril-

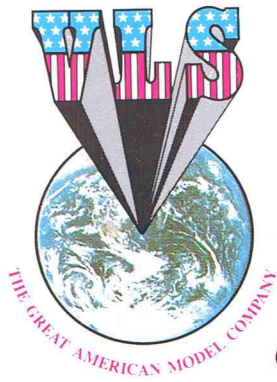
led holes with white glue and trimmed with scissors. It was then airbrushed with different shades of flat green enamel. This was on a 120mm Diorama.

For 1/35 or other scales, it can be used straight from the box or with spray adhesive the bag of leaves included in the kit can be attached for different effects.

The possibilities are endless and they can be transformed into any season by adding or deleting leaves, and by spraying spring, summer or autumn colors.



Fig 5 Tow launcher surrounded by VP trees and hedgerows (note the application of static grass). The contents of the VP box are three times the amount used on this little vignette.



American Graffiti

Covering The American Modeling Scene



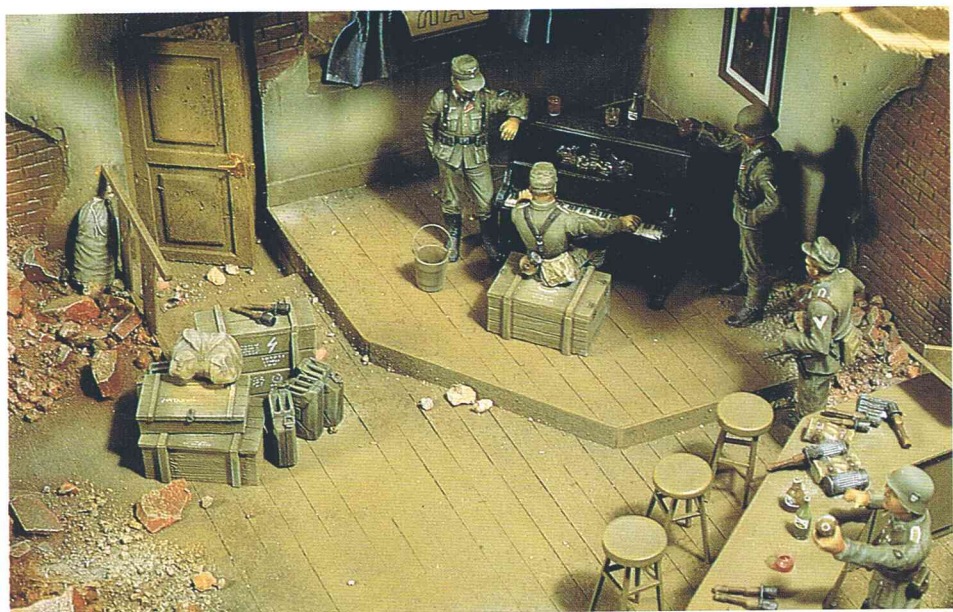
Le Chat Bleu

By Arturo Flores,
photos by Pablo Casas

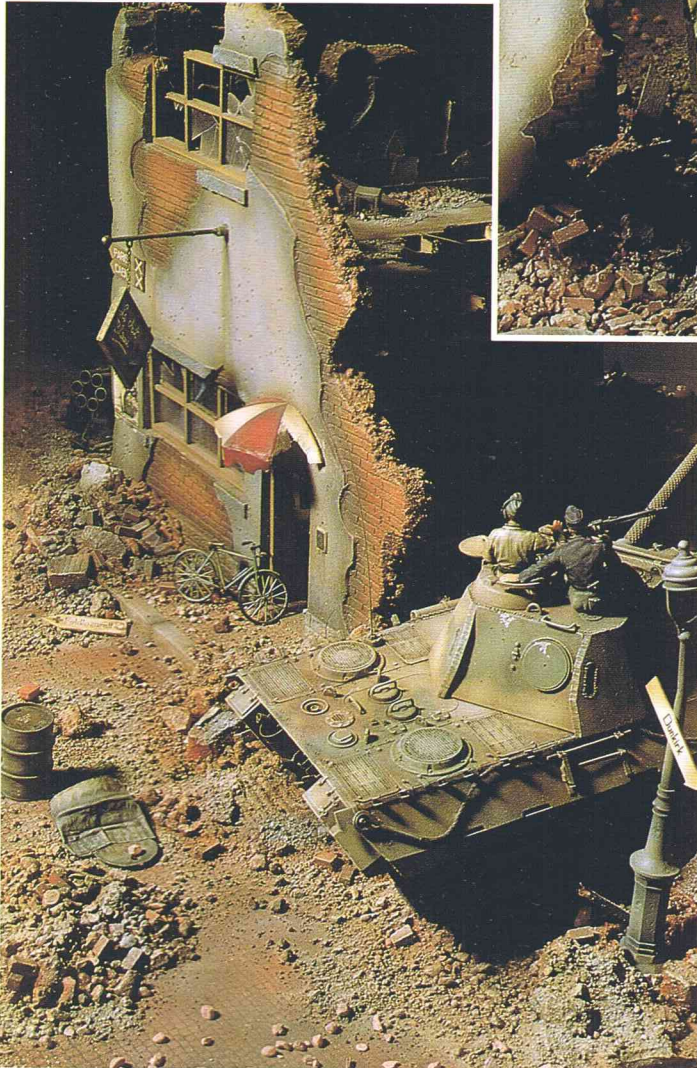
When I decided to make an urban diorama, what instantly came to mind was the idea of a French bar in one of the many towns of the wine region. To adapt it to the military theme, it had to be partially destroyed and, of course, occupied by German soldiers, and naturally, they would be drinking and playing the piano.

THE VEHICLES

The Tamiya Panther is somewhat dated and a lot of detailing was required to achieve an attractive and accurate model. The hull area under the fenders was filled with plastic card and the holes



molded to accommodate the motor were filled with putty. The battle damage was simulated with a motor tool and the weld seams were emphasized with a pyrograph. The model was superdetailed with a Panther photoetched update set from On the Mark Models. Further details such as the MG mount on the commanders cupola, the periscopes and the gun travel lock were made from



plastic card and copper wire. The Nebelwerfer was basically out of the box with some extra detailing. Both were painted with Humbrol, then an application of Testors Dullcote, and an artists oil wash. It was drybrushed in consecutively lighter shades of the base colors and completed with a touch of pastels.

THE FIGURES

The figures are the Tamiya German soldiers at rest, German observation group and German artillery troops, and the VP German tank crew. All were posed, painted with Humbrol paints, blended with artists oils and detailed with the VP German uniform badges.

THE BUILDING

The structure of the building is of plywood with pyrograph etched bricks and bullet holes. The windows were made of basswood and clear styrene. The street is VP Cobblestone. The groundwork began with pieces of plywood to establish the terrain, covered with a mixture of Celluclay and white glue. This was covered with still wet VP Assorted debris along with small pebbles, sand and rocks. Once dry, it was painted with enamels and drybrushed with artists oils. The diorama was detailed with Italeri Jerry cans, Tamiya lantern and various parts from the scrap box.

The "Axe" strikes again *The modeler strikes back!*

Excuse me Mr.....is it Ax? My diorama didn't place in the competition and I was told you were the head judge.

Yes, I judged your diorama, if that's what you call it. Don't tell me you were actually expecting to win with that thing.

Well, it had won best in show at several other competitions.

This isn't other competitions, this is N.A.S.M., the elite of the elite. I miss nothing, understand I, nothing! For example, 1 flag on your diorama was blowing in the opposite direction from the others, and there was no smoke coming from your fire.

Haven't you ever built a model? The flags were done that way on purpose, and how do you model convincing smoke?

Don't be absurd! If I had ever built a model, N.A.S.M. would disqualify me as a judge. As for your modeling flaws, don't waste my time. Show me absolute, infallible proof that flags can fly in opposite directions!

Proof?, I'll give you proof, and throw in some smoke for free! Judge this, Creep!



M10302

Volume 3 Number 2

VERLINDEN PRODUCTIONS

Modeling Magazine

In this issue



In focus:
The US Navy's
GPC or "MULE"



"Am Bahnhof"
"Fall Gelb"
Two new WWII
dioramas

"Alte Kameraden"
A large 120mm diorama

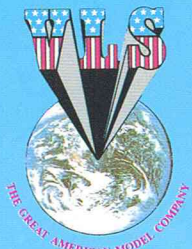


IDF
"Tracked Headshed"
Command & Communications
Vehicle

Tools & Techniques
"Modeling Vegetation"

VERLINDEN PRODUCTIONS
Modeling Magazine
Your Hobby connection

"Order now and be the first
to receive these new
VP releases."



VLS
Lone Star Industrial Park
811, Lone Star Drive
O'Fallon, Mo 63366
(314) 281-5700 Fax (314) 281-5750



No less than 4 new books will be released in April which can be used in combination with VP's Update Sets to turn your models into real masterpieces. On popular demand the range of 1:35 German figures is expanded (only a few shown here) and the range of 120mm accessories is ever increasing.

WARMACHINES N'10

MILITARY PHOTO FILE

Michael MASS



WARMACHINES N'9

MILITARY PHOTO FILE

M113 / PART 2
664



LOCKON N'13

AIRCRAFT PHOTO FILE

670

AH-64A APACHE

ATTACK HELICOPTER

Willy PEETERS



LOCKON N'14

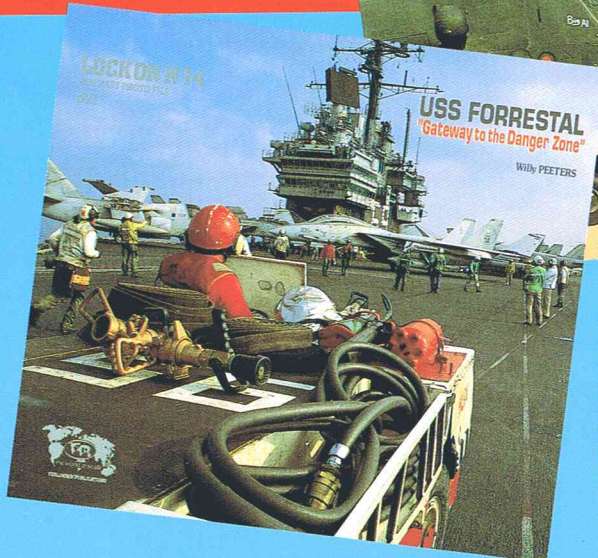
MILITARY PHOTO FILE

682

USS FORRESTAL

"Gateway to the Danger Zone"

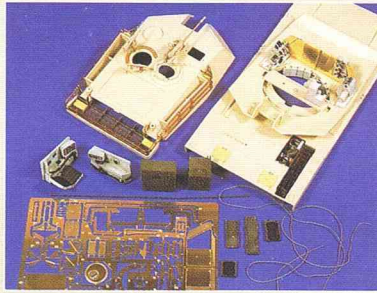
Willy PEETERS



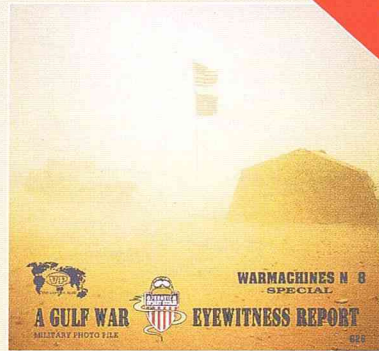
Foreword by LtC Patrick J. SHEAHAN
Commander 3 BNV227AVN



Modeling books & accessories



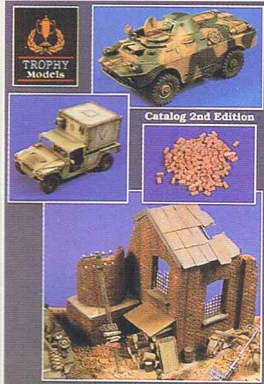
VP4 621 1/35 M1A1
Abrams Update \$32.95



VP1 626 WarMachines-
Gulf War Special \$13.95



VP6 629 120mm
German Sniper
WWII \$29.95



Trophy Models
Catalog N° 2 \$ 4.95
Full color

**NEW TROPHY
RELEASES**

- TP 20035 Arab House
Ruin 1/35..... \$15.95
- TP 20036 Normandy
Farm Gate 1/35. \$15.95
- TP 20038 Single Bed +
End Tables 1/35. \$ 7.95
- TP 20039 Bedroom
Furniture 1/35.... \$ 9.95
- Coming in January**
- TP 20040 Dining Room
Table + 4 Chairs 1/35
- TP 20041 Dining Room
Furniture 1/35
- TP 20042 Furniture
Assortment 1/35

Purchase of VLS, Verlinden or Trophy catalog(s)
includes one-year subscription to VLS newsletter.

Verlinden Productions



VP4 625 1/4 Uzi Sub-
machine Gun \$15.95



VP6 628 120mm SAW Gunner
Desert Storm \$32.95



VP4 623 120mm Special
Forces Small Arms \$16.95



VP6 624 1/35 SS
Infantry WWII \$17.95



Verlinden Productions
Catalog N° 10 \$ 9.95
Full color



VLS
has the products
you're looking for.

**1991 VLS Mail Order
Catalog N° 11 \$ 6.00**
Includes 1 year subscription
to the monthly VLS newsletter.
Catalog includes all VLS products.

VLS MAIL ORDER

Lone Star Industrial Park
811 Lone Star Drive
O'Fallon, MO 63366
(314) 281-5700 Fax (314) 281-5750



VP1 627 Tornado
Lock-On N°12 \$13.95

**"DEFINING
THE STANDARD"**

**Verlinden Productions
Modeling Magazine**
Newstand/Hobbyshop price \$ 5.95
Full color Quarterly



VM-02-04 Verlinden Productions
Modeling Magazine \$ 5.95

This issue features; M109AL (IDF)
(Israeli Defense Force) Part 2, FN MAG 7.62 mm,
Yesterday's News- a 120mm Nebelwerfer & figure
diorama, Operation "Lebanese Border 1982",
Painting Desert Camouflage, "Camel Busters",
"Masquerade"-Operation Greif- the Battle of the
"Bulge", Lockheed's famous "One-O-Four",
Tools & Techniques..Dealing with Photo-
etched parts, Modeler's in Focus and much more.

Subscribe to the VERLINDEN
PRODUCTIONS Modeling Magazine
now and receive 1 year
(4 full color issues).

- U.S.A. - First Class - \$26.95
- U.S.A. - Third Class - \$19.95
- Canada/Mexico Air - \$29.95
- Canada/Mexico Surface - \$26.95
- Foreign Air - \$39.95
- Foreign Surface - \$29.95

DEALERS: Increase your sales . . .
Put new life into your inventory with
thousands of new products. For details
contact . . . Legacy Distributors
Lone Star Industrial Park
811 Lone Star Drive
O'Fallon, MO 63366 U.S.A.



REN

Heute
Spiegel mit
Wur!

König-Brauerei

Gasthof

Frontstadt
Frankfurt
wird gehalten!